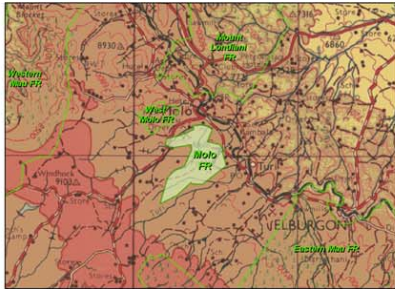


**Molo Forest (902 hectares) is located in the centre of the upper catchments of the Molo River, one of the two main tributaries of Lake Baringo. The forest has been clear cut to pave way for settlements.**

**Location map**



Molo Forest Reserve has an area of approximately 901.62 hectares. It was mainly covered by forest plantations (80 percent), the remaining being under indigenous forest. The forest is part of the upper catchment of Molo River.

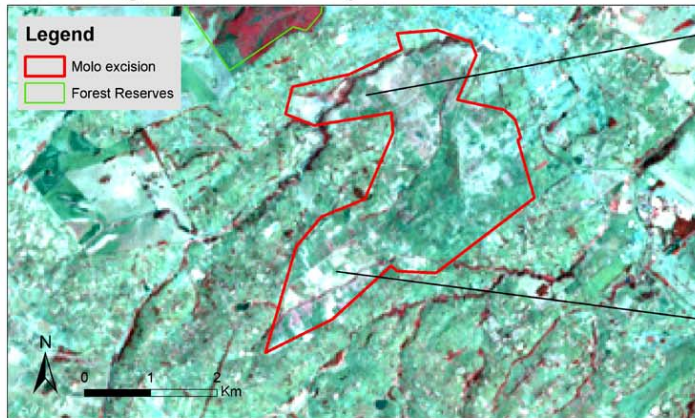
Molo Forest Reserve has been entirely excised by Legal Notice 145 of 19 October 2001.

Based on satellite image and aerial survey, it appears that all plantations have been harvested and not replanted with tree seedlings. The indigenous forest has been clear cut. Nevertheless, the forest has not been settled to date.

**Aerial view taken on 2 February 2002**



**Satellite image taken on 12 February 2000**



**Aerial view taken on 2 February 2002**



Poster prepared by  
**Kenya Forests Working Group**  
with support from  
**Friend of Mau Watershed (FOMAWA)**  
February 2002

Data sources:  
- Landsat ETM 7 image taken on 12 February 2000  
- UNEP GRID/Southern Kenya  
- Forest Reserve boundaries based on KIPCCO project, Forest Department (1991-1994)  
- Forest excision boundaries based on information provided by the Kenya Forests Working Group  
- Past ground cover based on "Forests of Kenya - Kericho sheet" scale 1:250,000 revised on 5 March 1997  
- Topomap at scale 1:250,000